

## Tracking AF

Keeps fast moving subjects in the frame and in focus, even when the zoom is fully extended. Great for capturing dynamic close-ups.



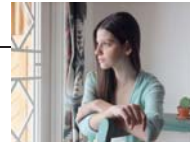
## Panorama Mode



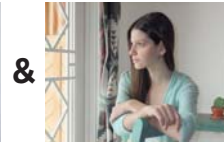
Create impressive panoramic photos in-camera. This convenient feature captures and combines three consecutive shots in one panoramic image and saves it to the memory card.

## Natural Light & with Flash

Not sure whether or not you need to employ the flash? Natural Light & with Flash takes two photos in quick succession, one with flash and one without, so you can choose which works best.



Natural Light (flash off)



With Flash

## SPECIFICATIONS

Number of effective pixels <sup>*1</sup>	12.2 million pixels
CCD sensor	1/2.3-inch CCD
Storage media	Internal memory (Approx. 23MB) / SD memory card / SDHC memory card <sup>*2</sup>
File format	Still image: JPEG (Exif Ver. 2.2 <sup>*3</sup> ) / Movie: AVI (Motion JPEG) with Sound / Audio: WAVE format, Monoaural sound (Design rule for Camera File system compliant / DPOF-compatible)
Number of recorded pixels	L: 4,000 × 3,000 (4:3) / 4,000 × 2,664 (3:2) / 4,000 × 2,248 (16:9) M: 2,816 × 2,112 (4:3) / 2,816 × 1,864 (3:2) / 2,816 × 1,584 (16:9) S: 2,048 × 1,536 (4:3) / 2,048 × 1,360 (3:2) / 1,920 × 1,080 (16:9)
Lens	Fujinon 18× optical zoom lens, F3.1 (Wide) - F5.6 (Telephoto)
Lens focal length	f=5.0 - 90.0 mm, equivalent to 28 - 504 mm on a 35 mm camera
Digital zoom	Approx. 6.3×
Aperture	Wide: F3.1 / F6.4, Telephoto: F5.6 / F11 with ND filter
Focus distance (from lens surface)	Normal: Wide: Approx. 40 cm / 1.3 ft. to infinity, Telephoto: Approx. 2.5 m / 8.2 ft. to infinity Macro: Wide: Approx. 5 cm - 3.0 m / 2.0 in. - 9.8 ft., Telephoto: Approx. 1.8 m - 3.0 m / 5.9 ft. - 9.8 ft., Super Macro: Wide: Approx. 2 cm - 1.0 m / 0.8 in. - 3.3 ft.
Sensitivity	Auto / Equivalent to ISO 64 / 100 / 200 / 400 / 800 / 1600 / 3200 / 6400 (Standard Output Sensitivity) *ISO 3200 / 6400: Number of recorded pixels: 3M pixels or lower
Shooting modes	Mode dial: SR AUTO (Scene Recognition), AUTO, P, S, A, M, Custom, Movie, Panorama, SP SP: Natural Light, Natural Light & with Flash, Portrait, Landscape, Sport, Night, Night (Tripod), Fireworks, Sunset, Snow, Beach, Party, Flower, Text, Smile, Zoom bracketing
Shutter speed	(Auto mode) 1/4 sec. to 1/2000 sec. (All other modes) 8 sec. to 1/2000 sec.
LCD monitor	3.0-inch, Approx. 230,000 dots, color LCD monitor, Approx. 97% coverage
Movie recording	1280 × 720 pixels / 640 × 480 pixels / 320 × 240 pixels / (30 frames/sec.) with monoaural sound
Power supply <sup>*4</sup>	4 x AA type alkaline batteries (included) / 4 x AA type Ni-MH rechargeable batteries (commercially available) / 4 x AA type lithium batteries (commercially available) / DC coupler CP-04 with AC power adapter AC-SVX (sold separately)
Dimensions	110.2 (W) × 73.4 (H) × 81.4 (D) mm / 4.3 (W) × 2.9 (H) × 3.2 (D) in. (excluding accessories and attachments)
Weight	Approx. 337 g / 11.9 oz. (excluding accessories, battery and memory card)

\*1: Number of effective pixels: The number of pixels on the image sensor which receive input light through the optical lens, and which are effectively reflected in the final output data of the still image.

\*2: Please see the Fujifilm website to check memory card compatibility.

\*3: Exif 2.2 is a digital camera file format that contains a variety of shooting information for optimal printing.

\*4: Manganese dry and nickel-cadmium batteries cannot be used with this product.



For more information, please visit our Website:

[http://www.fujifilm.com/products/digital\\_cameras/index.html](http://www.fujifilm.com/products/digital_cameras/index.html)

Specifications are subject to change without notice.  
All sample photos are simulated images.

## Feature-packed 18x Zoom Bridge Camera





## 12 Megapixels

Captures sharp, high resolution photos and videos, suitable for enlarging or displaying on a big screen.

## 3.0 inch LCD

The generous 3 inch LCD screen makes it easy to compose and view your images.

## Fujinon 18x Optical Zoom Lens

With the versatile 18x zoom lens you'll have every photographic situation covered and will never need to miss out capturing the action.



28mm Wide Angle



5x Optical Zoom



18x Optical Zoom

## SR AUTO **SR** AUTO

### with Automatic Red-Eye Removal

Automatically recognizes six of the most commonly photographed scenes and optimizes the camera's settings to deliver beautiful results every time. Plus, red-eye removal eliminates any unsightly red-eye reflections to ensure flattering flash portraits and party pictures.



Portrait



Macro



Portrait



Night



Macro



Landscape



Night Portrait



Backlit Portrait

## Instant Zoom

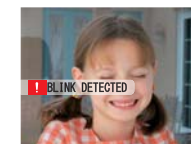
A selectable frame on the LCD screen lets you bracket and track moving subjects in standard wide view.

## Zoom Bracketing

Enables three shots to be taken at the single press of the button, at varying degrees of magnification (original, 1.4 x and 2.0 x). This enables instant editing on the camera to choose the ideal shot, rather than having to go back to a PC to facilitate a digital crop.

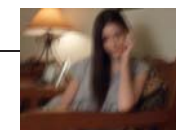
## Smile & Shoot Mode **NEW**

In the 'Smile' scene position mode, the camera automatically triggers the shutter button and takes a photo only once a smile is detected, giving you people pictures to smile about.

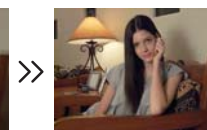


## Dual Image Stabilization

By combining CCD-shift image stabilization with high sensitivity the FinePix S2500HD greatly reduces the effects of camera shake and subject blur to deliver crisp, clear shots, across the entire zoom range. No more blurred and disappointing photos.



Conventional digital camera



FinePix S2500HD

## HDTV Compatible Photos and Videos

Able to capture both photos and movies in high definition 16:9 format, and lets you enjoy images on HDTV in breathtaking high definition quality.

## HDMI Mini Port

The FinePix S2500HD features a convenient HDMI mini port, for direct connection to your HDTV.

(Commercially available HDMI mini cable required.)

